



LINE LA PROPERTY MAP

3515 WILSHIRE BLVD
LOS ANGELES CA 90010
events.la@thelinehotel.com

[THELINEHOTEL.COM/LA](https://thelinehotel.com/la)

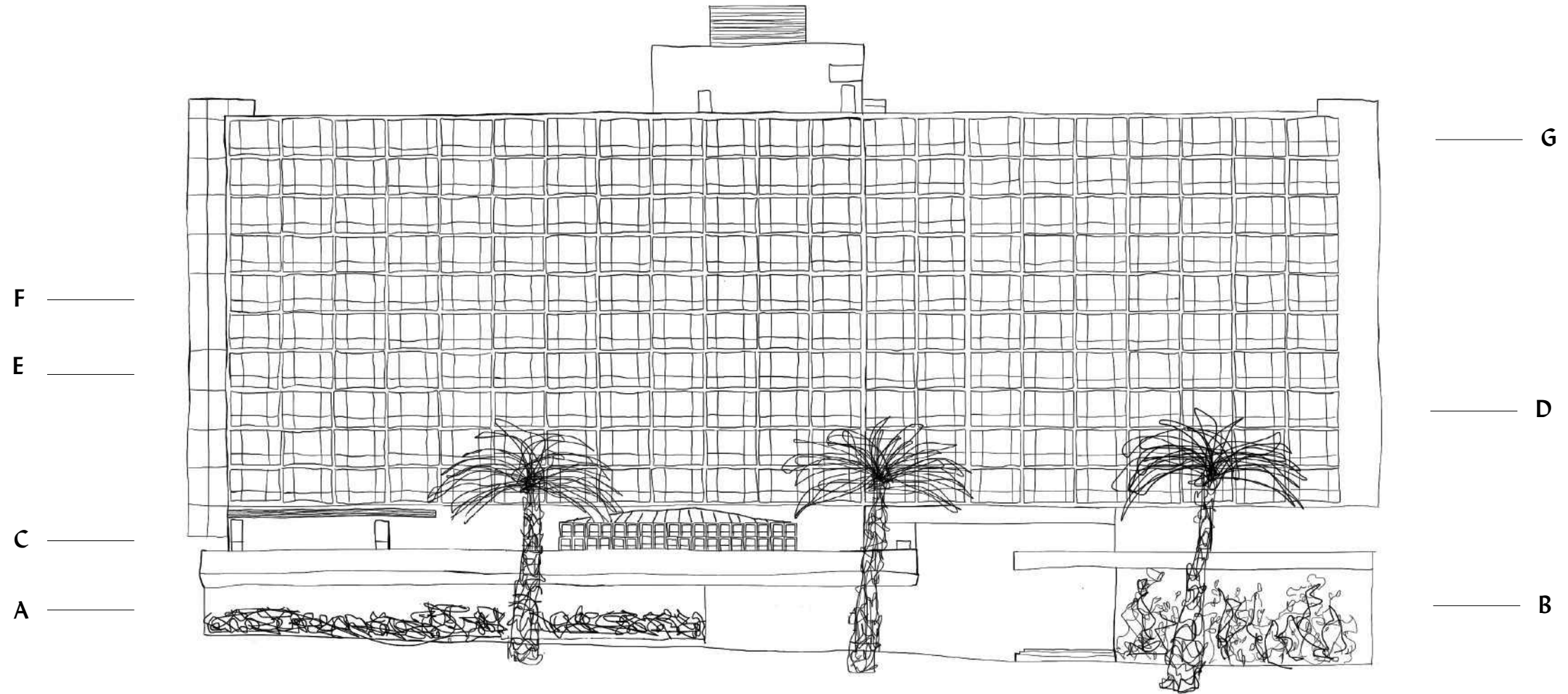
With 12,000 sq. feet of thoughtfully considered indoor and outdoor event space – streaming natural light, expansive city views, and a banquets and catering team led by Two Star Michelin Chef Josiah Citrin – events at the LINE LA are a truly distinctive experience.

From intimate weddings to grand events for up to 800 people; meetings, brand activations, and conferences: the LINE LA is a creative playground. Its unique architecture, aesthetic, and location lend ultimate versatility and endless possibility, and our on-site special events team can work with you to maximize your vision.

THE LINE LA OFFERS —

- 384 GUEST ROOMS
- 12,000 SQ FT OF MEETING SPACE
- 5 RESTAURANTS AND BARS
- 1 YEAR ROUND OUTDOOR POOL
- 24/7 BUSINESS CENTER
- 24/7 FITNESS CENTER





A STREET LEVEL

ALFRED COFFEE
 LOBBY BAR
 KISS KISS BANG BANG

B IVY BUILDING

SHATTO BALLROOM
 SHATTO FOYER
 SHATTO STUDIOS A / B / C
 MOTOR COURT

C SECOND LEVEL

GRAMERCY BALLROOM
 GRAMERCY FOYER
 GRAMERCY GARDEN
 GRAMERCY TERRACE
 POOL DECK
 OPENAIRE
 OPENAIRE EAST
 BREAK ROOM 86
 BREEZEWAY

D SPEEK SUITES

E BUSINESS & FITNESS CENTER

F STUDIOS

STUDIO 6A & B
 STUDIO 8A & B

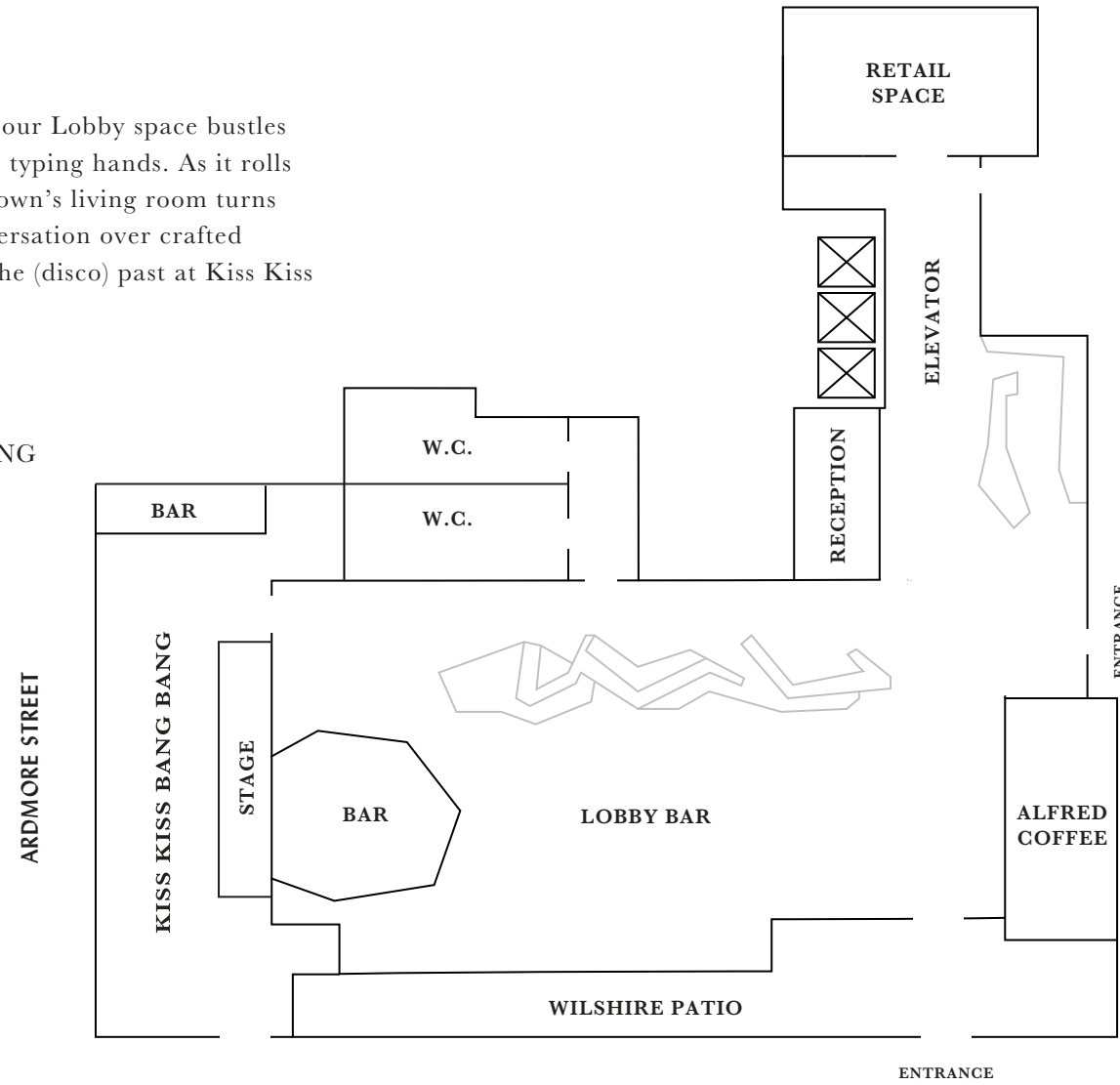
G SUITE LEVELS

HOLLYWOOD HILLS APARTMENT SUITE
 APARTMENT SUITE

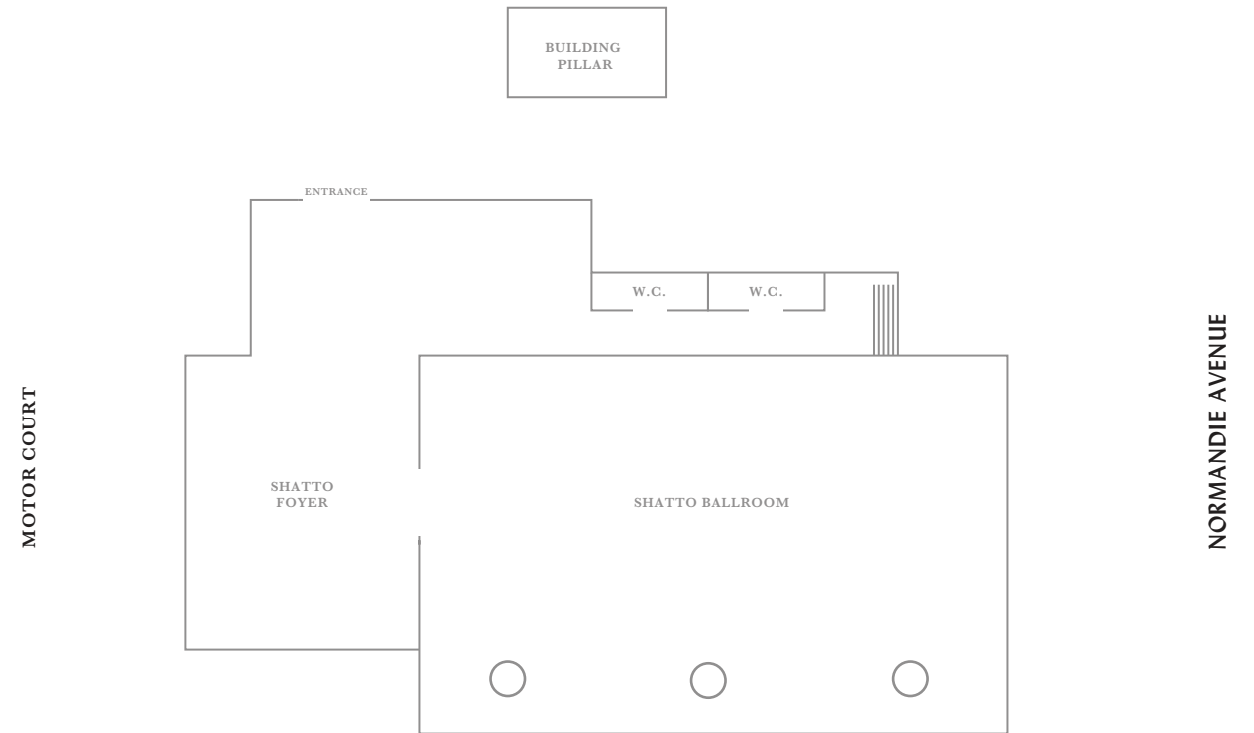
STREET LEVEL

Morning to afternoon, our Lobby space bustles with cups of coffee and typing hands. As it rolls into nighttime, Koreatown's living room turns into a space for a conversation over crafted cocktails or a blast to the (disco) past at Kiss Kiss Bang Bang.

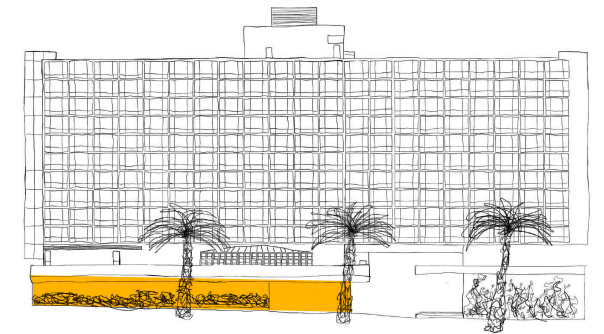
ALFRED COFFEE
 LOBBY BAR
 KISS KISS BANG BANG



MOTOR COURT



WILSHIRE BLVD

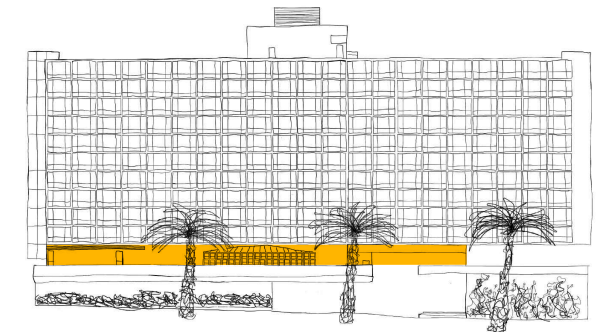
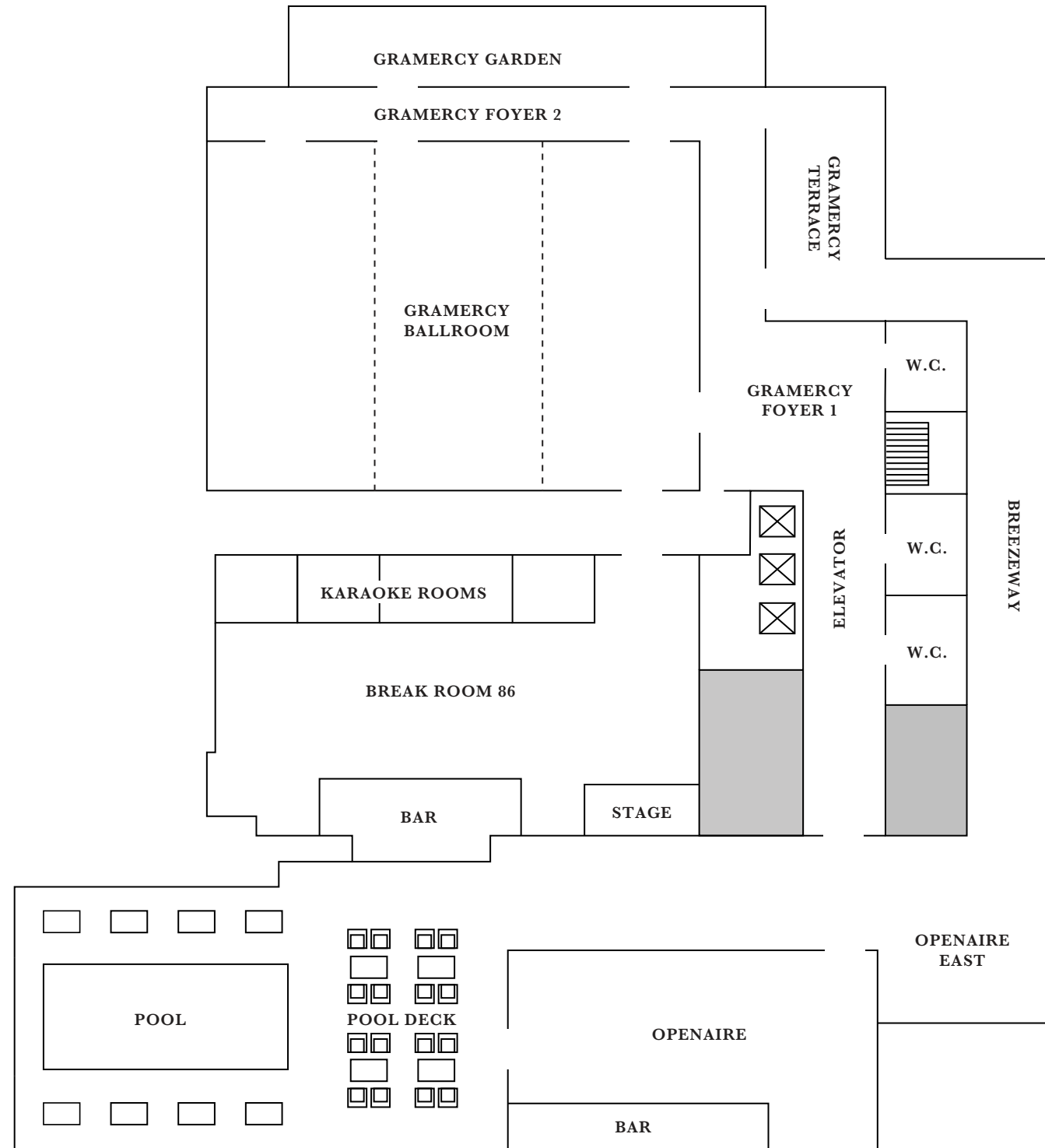


SECOND LEVEL

From intimate weddings to grand events for up to 800 people, we invite you to imagine your event with a particular space in mind or flowing seamlessly throughout the entire floor. With multiple venues to fit every unique need and guest size; from our outdoor pool deck, a spacious ballroom with independent access to an indoor/outdoor foyer and garden, a lush greenhouse restaurant, and a speakeasy bar that takes you back to 1986--the second level is your creative playground.

- GRAMERCY BALLROOM**
FULL: 77 x 53'
CAPACITY: 425
- GRAMERCY FOYER**
FOYER 1: 26 x 24
CAPACITY: 60

FOYER 2: 53 x 17
CAPACITY: 100
- GRAMERCY GARDEN**
63 x 13'
CAPACITY: 100
- GRAMERCY TERRACE**
46 x 16'
CAPACITY: 70
- POOL DECK**
73 x 44'
CAPACITY: 150
- OPENAIRE**
60 x 30'
CAPACITY: 140
- OPENAIRE EAST**
25 x 20'
CAPACITY: 75
- BREAK ROOM 86**
1,694 Sq. Ft.
CAPACITY: 250
- BREEZEWAY**
80 x 12'
CAPACITY: 150



IVY BUILDING I

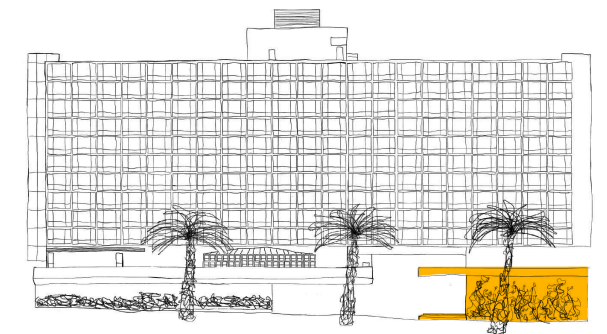
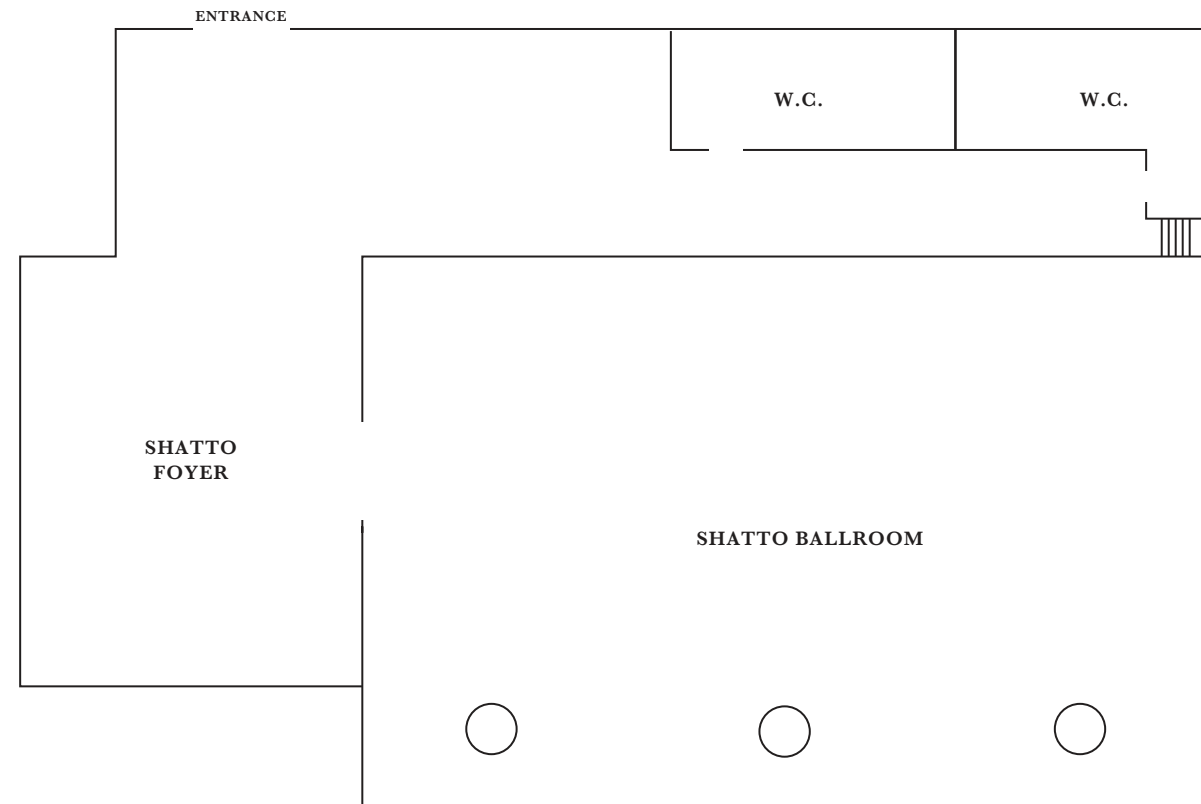
With its soaring 16-foot ceilings, the Shatto Ballroom works equally well for elegant social events or corporate meetings. At 2,440 sq. feet, the ballroom can accommodate events up to 250 people and meetings for 200. The Shatto Foyer provides flexible space for food and beverage, registration desks, or exhibits.

SHATTO BALLROOM

61 x 40'
CAPACITY: 250

SHATTO FOYER

40 x 22'
CAPACITY: 90



IVY BUILDING II

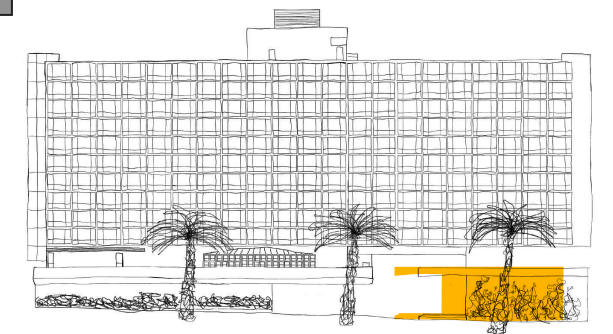
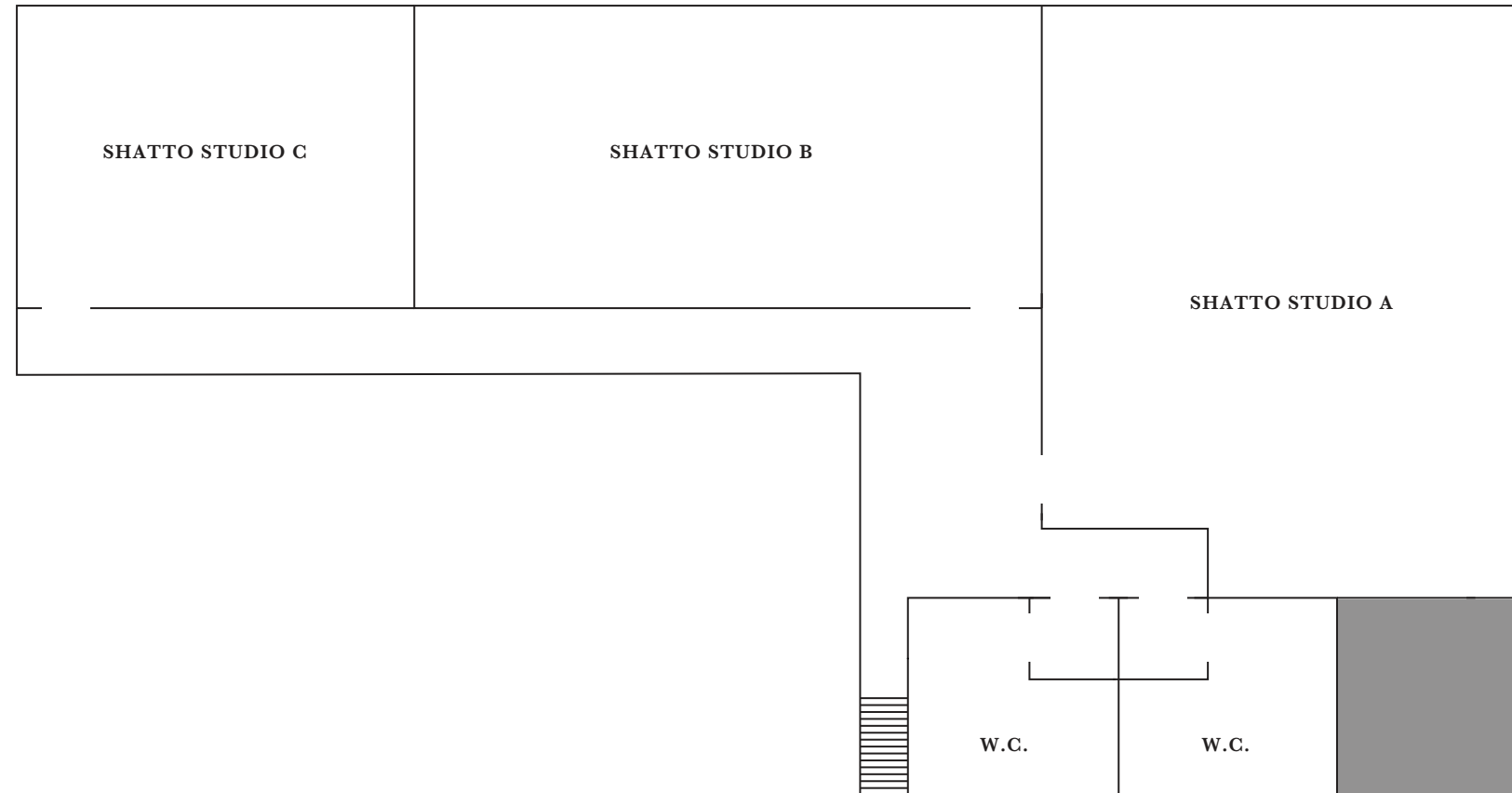
Located on the lower level in the Ivy Building, the Shatto Studios are quiet, secluded boardrooms ideal for filming, creative work sessions, and breakout groups.

SHATTO STUDIOS

STUDIO A: 32 x 25'
CAPACITY: 80

STUDIO B: 34 x 16'
CAPACITY: 50

STUDIO C: 25 x 16'
CAPACITY: 30



STUDIOS

Our studios are light-soaked boardrooms located on the 6th and 8th floors of the hotel. Featuring floor-to-ceiling windows offering views of the surrounding neighborhood, each studio space provides an ideal atmosphere for intimate meetings.

STUDIO 6A

25 x 14'

CAPACITY: 50

STUDIO 6B

24 x 12'

CAPACITY: 30

STUDIO 8A

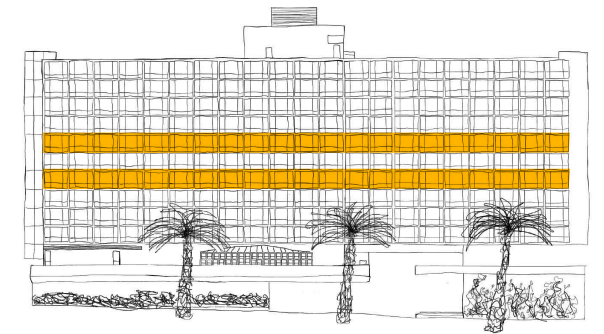
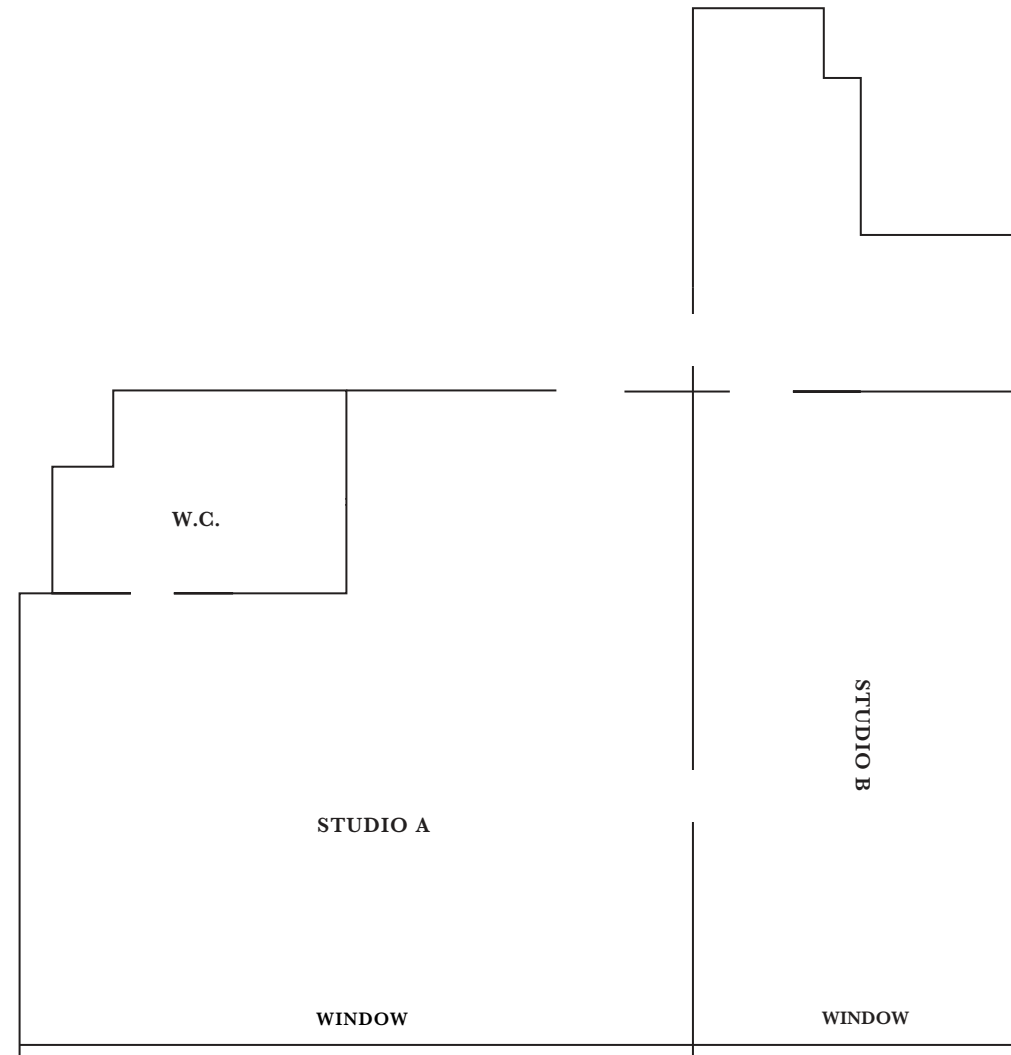
25 x 14'

CAPACITY: 50

STUDIO 8B

24 x 12'

CAPACITY: 30



SUITES

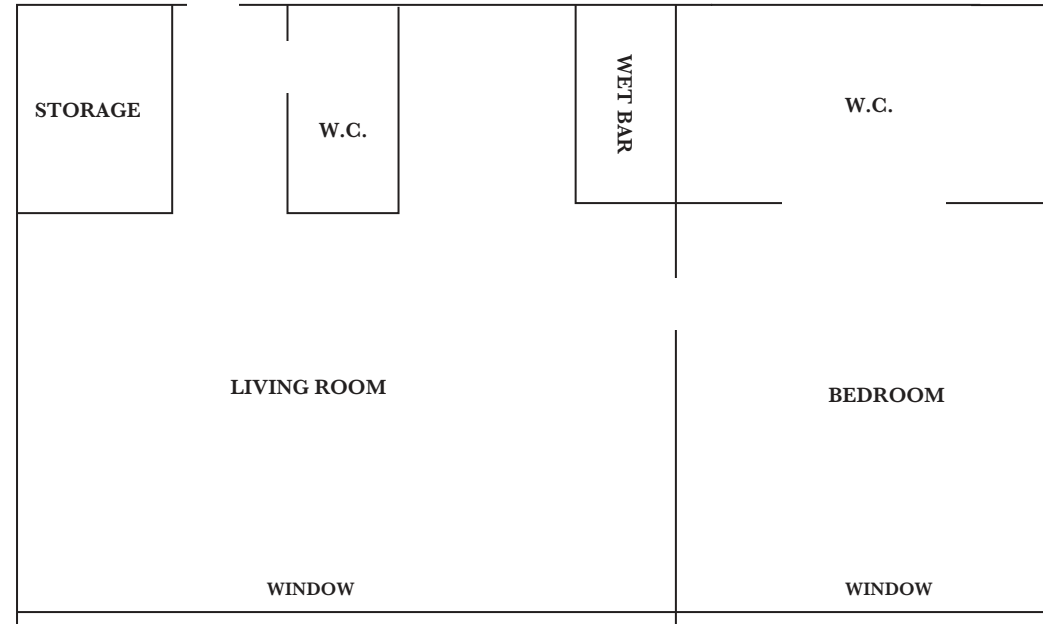
Creative events take on the shape of creative spaces, ideal for intimate gatherings, talks, pop-up shops, and photoshoots. Each suite features floor-to-ceiling windows, a separate seating area, wet bar, and California King sized bed.

APARTMENT SUITE

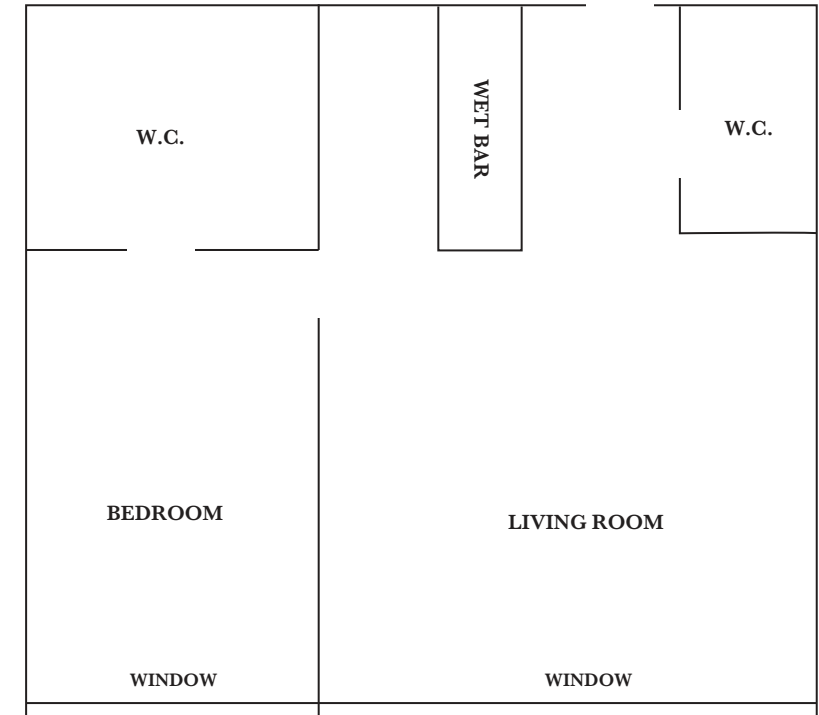
1,200 Sq. Feet
CAPACITY: 35

HOLLYWOOD HILLS APARTMENT SUITE

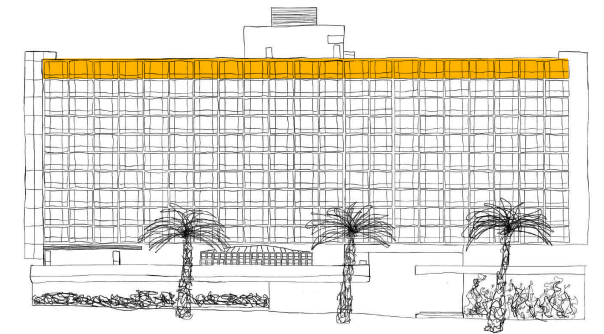
900 Sq. Feet
CAPACITY: 30



APARTMENT SUITE



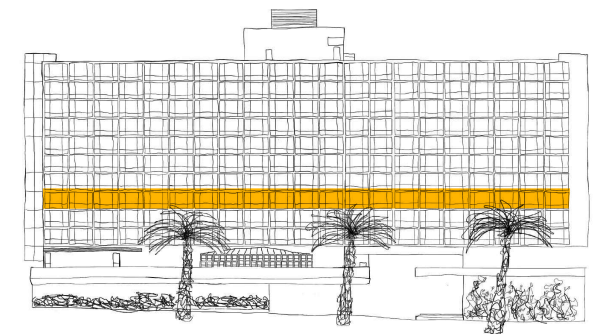
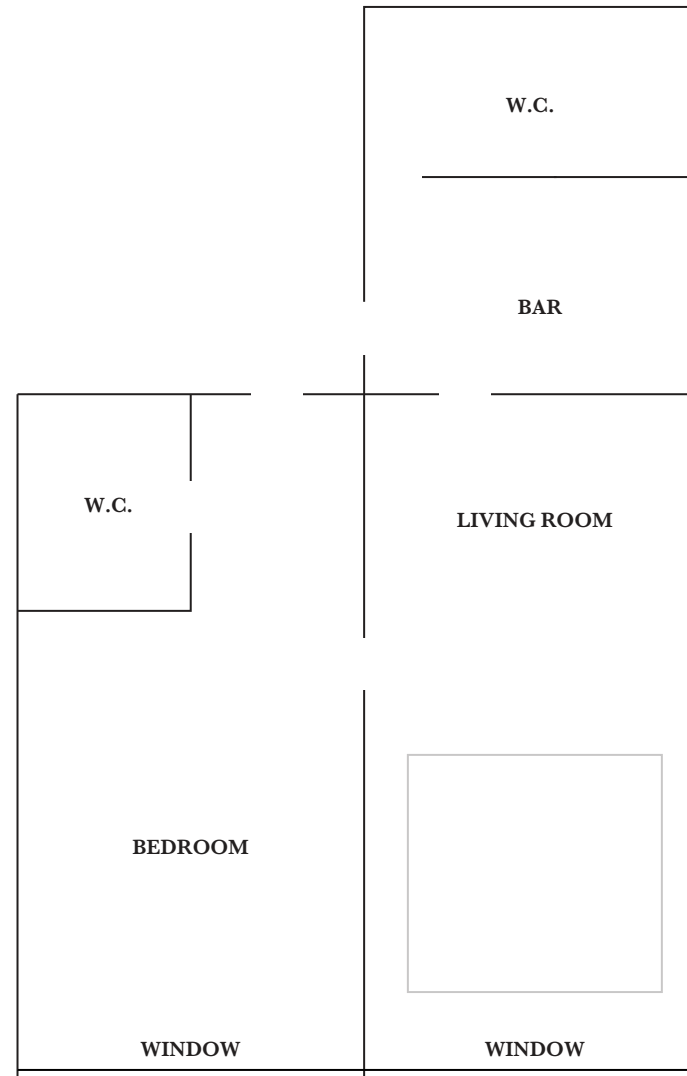
HOLLYWOOD HILLS APARTMENT SUITE



SPEEK SUITE

With The Speek Suite, brothers Mark and Jonnie Houston have created an immersive lodging and event space inspired by the 60s and 70s decor of their childhood Koreatown home. Malm-style fireplaces, retro wallpaper, ceiling-high curio cabinets, and curated vinyl collections surrounded by vintage textures will have you waxing nostalgic.

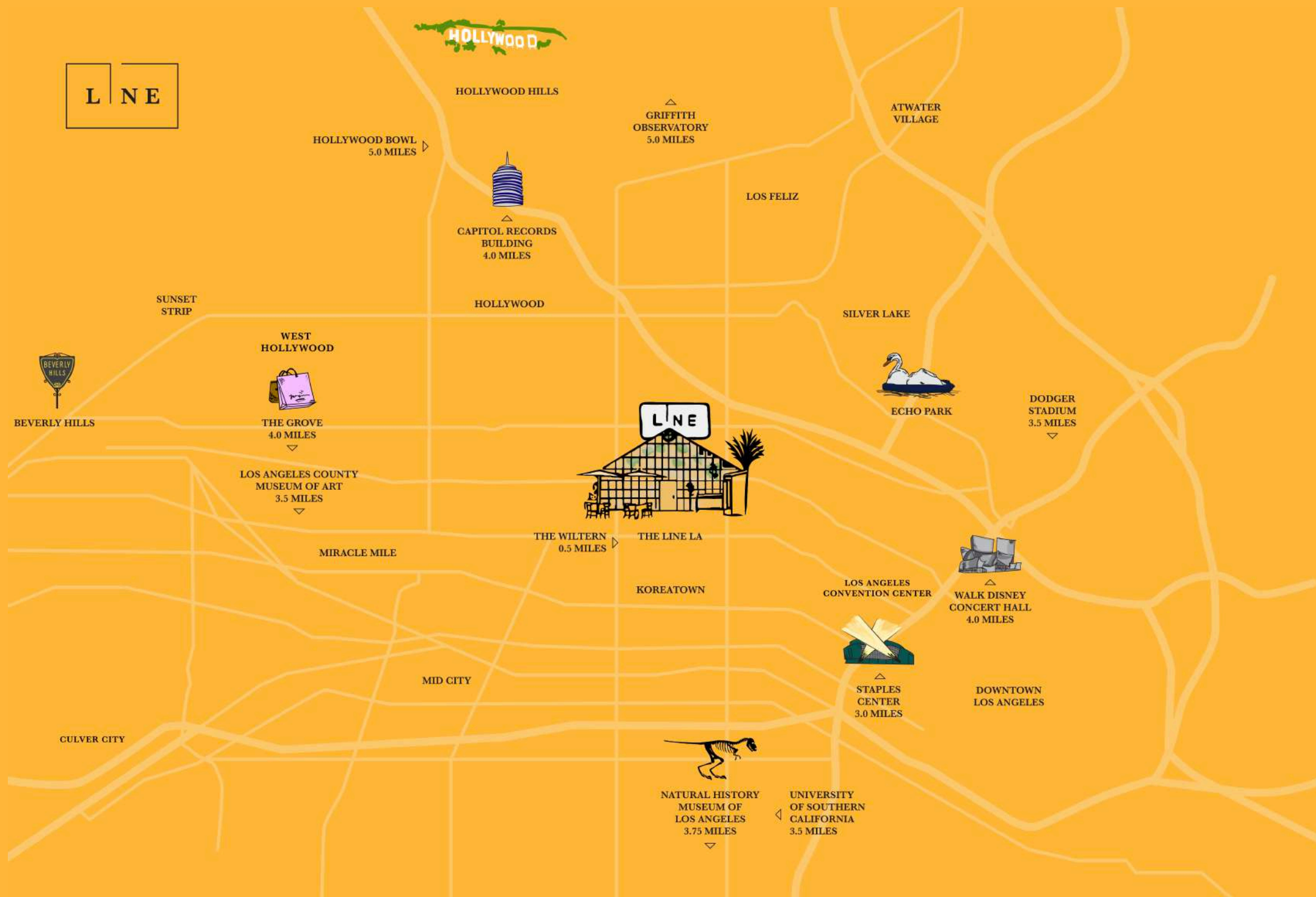
DIMENSIONS: 25 x 16'
CAPACITY: 30



EVENT SPACES CAPACITY CHART

ROOM	DIMENSIONS	SQ FT	CEILING HEIGHT	RECEPTION	BANQUET	THEATER	CLASSROOM	CONFERENCE	U-SHAPE	HOLLOW SQUARE	EXHIBIT
GRAMERCY BALLROOM	77 x 53	4081	10	425	320	400	216	82	106	132	26
GRAMERCY BALLROOM 2/3	53 x 53	2756	10	275	200	260	144	52	74	100	18
GRAMERCY BALLROOM 1/3	26 x 53	1378	10	135	90	130	72	52	59	70	9
GRAMERCY BALLROOM FOYER	—	1500	10	150	140	—	—	—	—	—	5
GRAMERCY BALLROOM FOYER 1	26 x 24	—	—	60	40	—	—	—	—	—	—
GRAMERCY BALLROOM FOYER 2	53 x 17	—	—	100	90	—	—	40	—	—	—
GRAMERCY TERRACE	46 x 16	736	OPEN	70	17	30	—	30	—	—	—
GRAMERCY GARDEN	63 x 13	850	OPEN	100	60	40	—	60	—	—	—
BREEZEWAY	80 x 12	960	OPEN	150	90	—	—	80	—	—	—
OPENAIRE EAST	25 x 20	500	OPEN	75	40	—	—	40	30	35	—
OPENAIRE	60 x 30	1800	—	140	98	90	—	90	—	—	—
POOL DECK	75 x 40	3000	OPEN	250	70	—	—	—	—	—	—
STUDIO 6A	25 x 14	350	8	50	40	44	21	22	23	22	—
STUDIO 6B	24 x 12	288	8	30	20	30	18	16	—	—	—
STUDIO 8A	25 x 14	350	8	50	40	44	21	22	23	22	—
STUDIO 8B	24 x 12	288	8	30	20	30	18	16	—	—	—
SHATTO BALLROOM	61 x 40	2440	16	250	180	192	84	46	56	70	15
SHATTO FOYER	40 x 22	880	16	90	30	—	—	—	—	—	6
SHATTO STUDIO A	35 x 25	800	8	80	60	60	30	22	23	34	6
SHATTO STUDIO B	34 x 16	544	8	50	40	56	24	26	22	—	—
SHATTO STUDIO C	25 x 16	400	8	30	30	44	33	22	—	—	—
SPEEK SUITE	25 x 16	900	8	30	—	—	—	—	—	—	—
MOTOR COURT	72 x 75	4000	OPEN	300	300	200	—	—	—	—	—
KISS KISS BANG BANG	—	1400	10	200	—	—	—	—	—	—	—
BREAK ROOM 86	—	1694	10	150	—	—	—	—	—	—	—
APARTMENT SUITE	—	1200	8	35	—	—	—	—	—	—	—
HOLLYWOOD HILLS VIEW SUITE	25x 16'	900	8	30	—	—	—	—	—	—	—

L | N | E



HOLLYWOOD

HOLLYWOOD HILLS

HOLLYWOOD BOWL
5.0 MILES

GRIFFITH
OBSERVATORY
5.0 MILES

ATWATER
VILLAGE



CAPITOL RECORDS
BUILDING
4.0 MILES

LOS FELIZ

SUNSET
STRIP

HOLLYWOOD

SILVER LAKE

WEST
HOLLYWOOD



THE GROVE
4.0 MILES



ECHO PARK

DODGER
STADIUM
3.5 MILES



BEVERLY HILLS

LOS ANGELES COUNTY
MUSEUM OF ART
3.5 MILES



THE WILTERN
0.5 MILES

THE LINE LA

MIRACLE MILE

KOREATOWN

LOS ANGELES
CONVENTION CENTER



WALK DISNEY
CONCERT HALL
4.0 MILES

MID CITY



STAPLES
CENTER
3.0 MILES

DOWNTOWN
LOS ANGELES

CULVER CITY



NATURAL HISTORY
MUSEUM OF
LOS ANGELES
3.75 MILES

UNIVERSITY
OF SOUTHERN
CALIFORNIA
3.5 MILES